

ALY LLOYD MAKING SENSE

25th June- 1st July 2026 | Sixteen Gallery, Cheltenham



EXHIBITION CATALOGUE

WWW.ALYLLOYD.CO.UK | INFO@ALYLLOYD.CO.UK | IG: @ALYLLOYD

EXHIBITION INFORMATION

I am delighted to invite you to *Making Sense*, my debut solo exhibition.

Bringing together a new body of textile paintings, *Making Sense* explores perception, sensory experience and the act of seeing through works created directly onto materials including velvet, denim, moiré, and linen.

Rather than presenting fixed images, the paintings respond to changing light, movement and viewing position, encouraging viewers to slow down, look closely and engage with the work as active viewing experiences.

Exhibition Information

Address: Sixteen Gallery, 16 Rotunda Terrace, Montpellier Street, Cheltenham, Gloucestershire GL50 1SW

Opening times: 10am-5pm Daily. Sunday 10am-4pm.

Exhibition Dates: Thurs 25th June - Weds 1st July

Opening Event: Thurs 25th, 5pm - 8.30pm. Complimentary drinks.

Everyone is warmly welcome to attend the opening event and visit throughout the exhibition. I will be at the gallery throughout to welcome visitors, answer questions and discuss the work and the ideas behind it.

All works featured in this catalogue are available to purchase prior to the exhibition opening. To enquire about a work, please email:

info@alylloyd.co.uk

I look forward to welcoming you to *Making Sense* and sharing this exhibition with you.

Aly

DYNAMIC PRICING INFORMATION

Decide your own value through dynamic pricing.

Building on an interest in how systems of display, language and value can distance art from people and everyday life, which inspired the launch of my 'always open' studio in 2024, *'Making Sense'* introduces a dynamic pricing concept that invites a more personal and participatory approach to collecting.

Rather than presenting the value of art as fixed, *Making Sense* encourages collectors to take an active role in the acquisition process, opening up opportunities to engage with and collect original artwork across a wider range of budgets.

Alongside each artwork in this catalogue, **you will find both a full price and a reserve price.** The reserve price has been set to reflect the costs of materials, framing and presentation. Visitors are invited to propose their own purchase price above the reserve value.

INTERLUDE



Acrylic on blue velvet

60 x 60 cm

2026

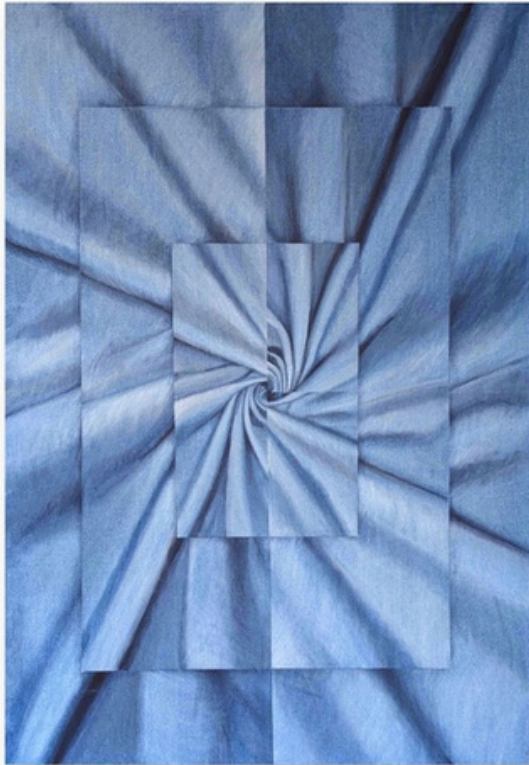
SOLD ●

INTERLUDE

Painted directly onto a hand-stretched blue velvet canvas, the work uses the optical qualities of the fabric to create illusions of depth and form. Fragmentations of the image interrupt perception, encouraging closer looking and drawing attention back to the painted surface.



DOUBLE DENIM²



Acrylic on denim

70 x 100 cm

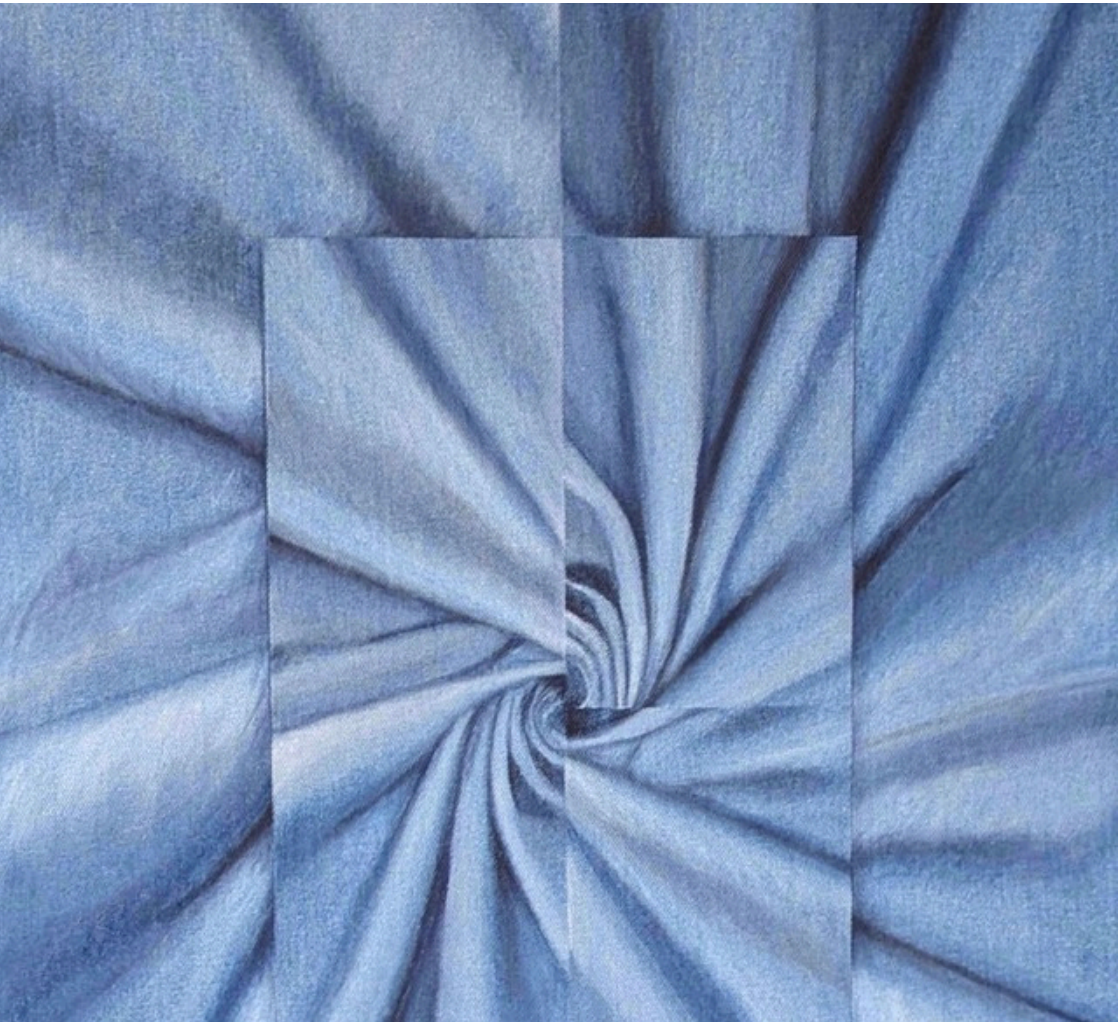
2026

Full price: £1,150

Reserve price: £630

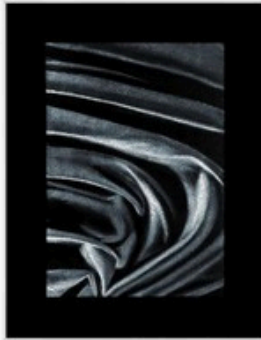
DOUBLE DENIM²

Painted in acrylic on a hand-stretched denim canvas, the work explores what happens when a familiar material becomes both the subject of a painting and the surface it is painted on. Sections of the denim canvas are left exposed, creating ambiguity between the painted image and the textile itself.

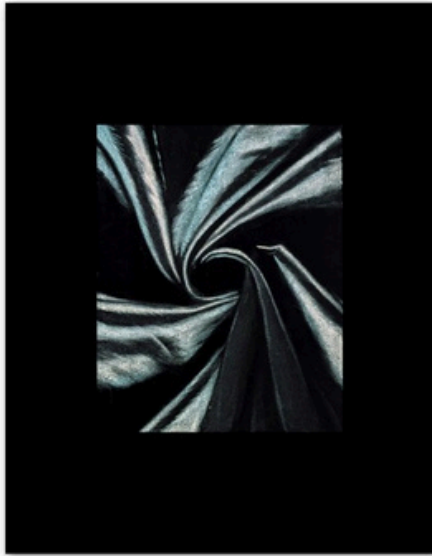


NOCTURNE I, II & III

Inspired by the tradition of black velvet painting, this series became the starting point for *Making Sense*. The light-absorbing surface of velvet creates deep blacks, heightened contrast and images that shift with changing light and viewing position.



NOCTURNE I



Acrylic on black velvet

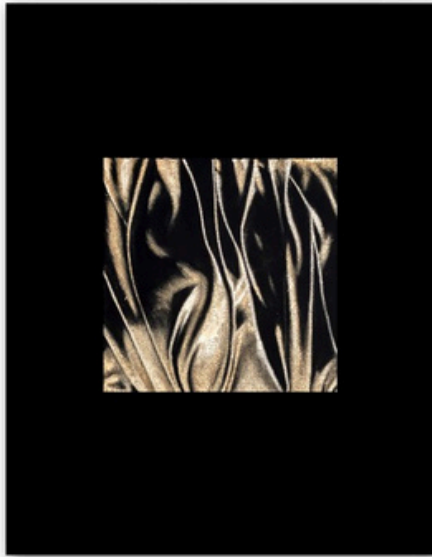
35 x 45 cm

2026

Full price: £400

Reserve price: £250

NOCTURNE II



Acrylic on black velvet

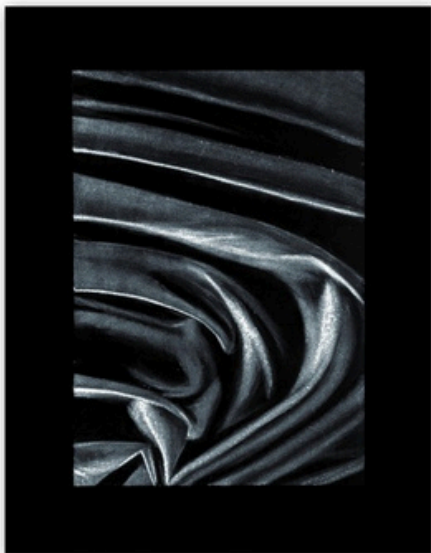
35 x 45 cm

2026

Full price: £400

Reserve price: £250

NOCTURNE III



Acrylic on black velvet

35 x 45 cm

2026

Full price: £400

Reserve price: £250

MANIFEST



Acrylic on blue velvet

76 x 122 cm

2026

Full price: £1,400

Reserve price: £730

MANIFEST

Hand-painted onto a light blue soft velvet, the work uses cutting, reframing and reversal to interrupt the illusion of material folds and draw attention back to the painted surface. As the viewer moves, subtle tonal shifts emerge across the velvet.



DENIM WEAVES



Acrylic on denim

50 x 70 cm

2026

Full price: £950

Reserve price: £470

DENIM WEAVES

A close-up view of woven denim is enlarged and abstracted, transforming a familiar material into an intricate field of pattern and texture. Hand-painted onto denim canvas.



AFTERIMAGE (GREEN)



Acrylic on patterned green linen

50 x 70 cm

2026

Full price: £950

Reserve price: £470

AFTERIMAGE (GREEN)

Painted directly onto a raw green linen, a subtle geometric pattern woven into the fabric emerges and recedes as the viewing angle changes.



AFTERIMAGE (SEQUINS)



Acrylic on cream velvet

61 x 61 cm

2026

Full price: £850

Reserve price: £420

AFTERIMAGE (SEQUINS)

Painted onto a light-responsive velvet surface, this work changes with movement and viewing angle, revealing subtle shifts in colour and depth.



BLOOM I



Acrylic on pink velvet

50 x 50 cm

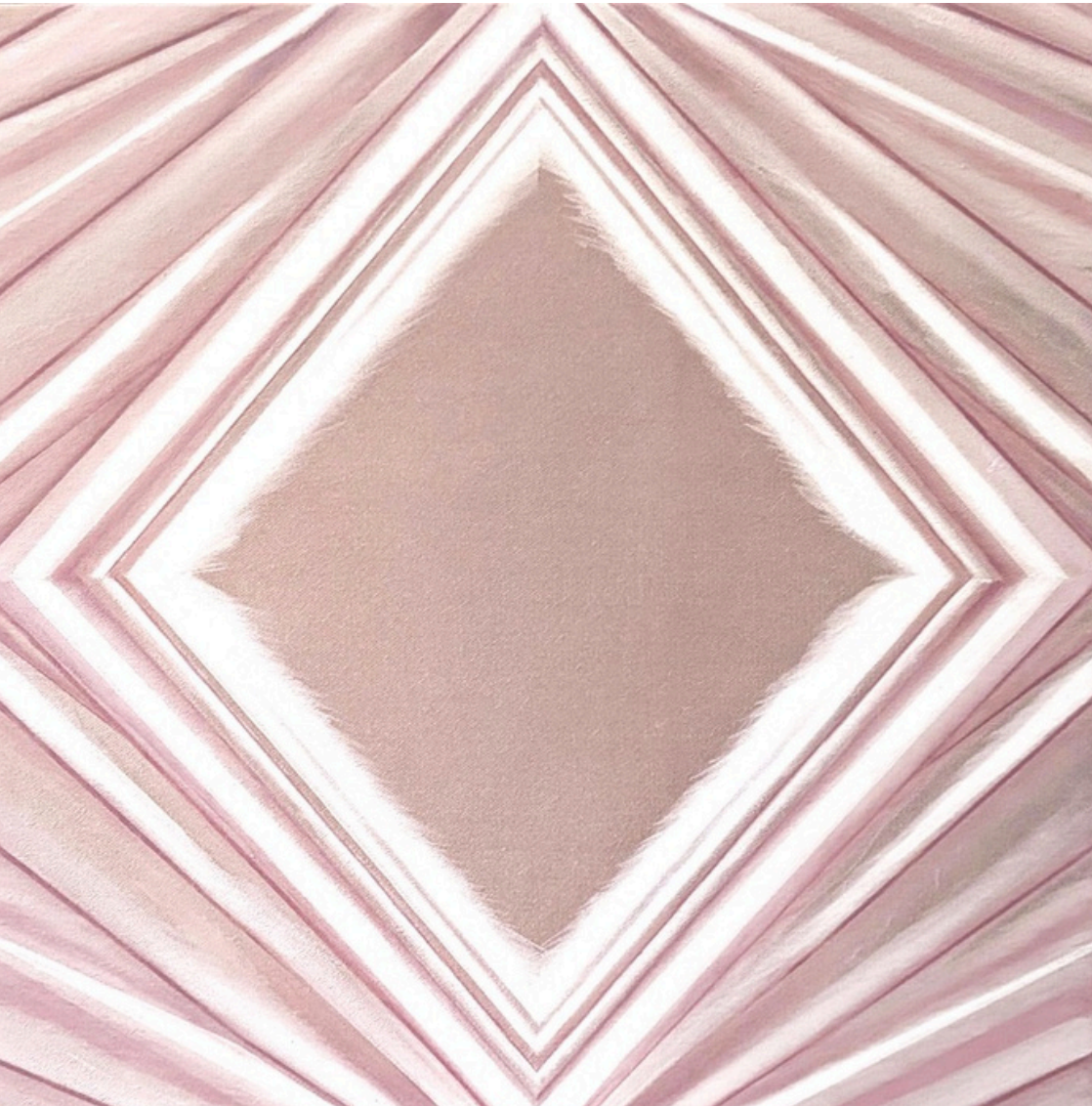
2026

Full price: £650

Reserve price: £320

BLOOM I

Using repeated and rearranged images of fabric edges, the work transforms a familiar detail into a geometric composition.



BLOOM II



Acrylic on pink velvet

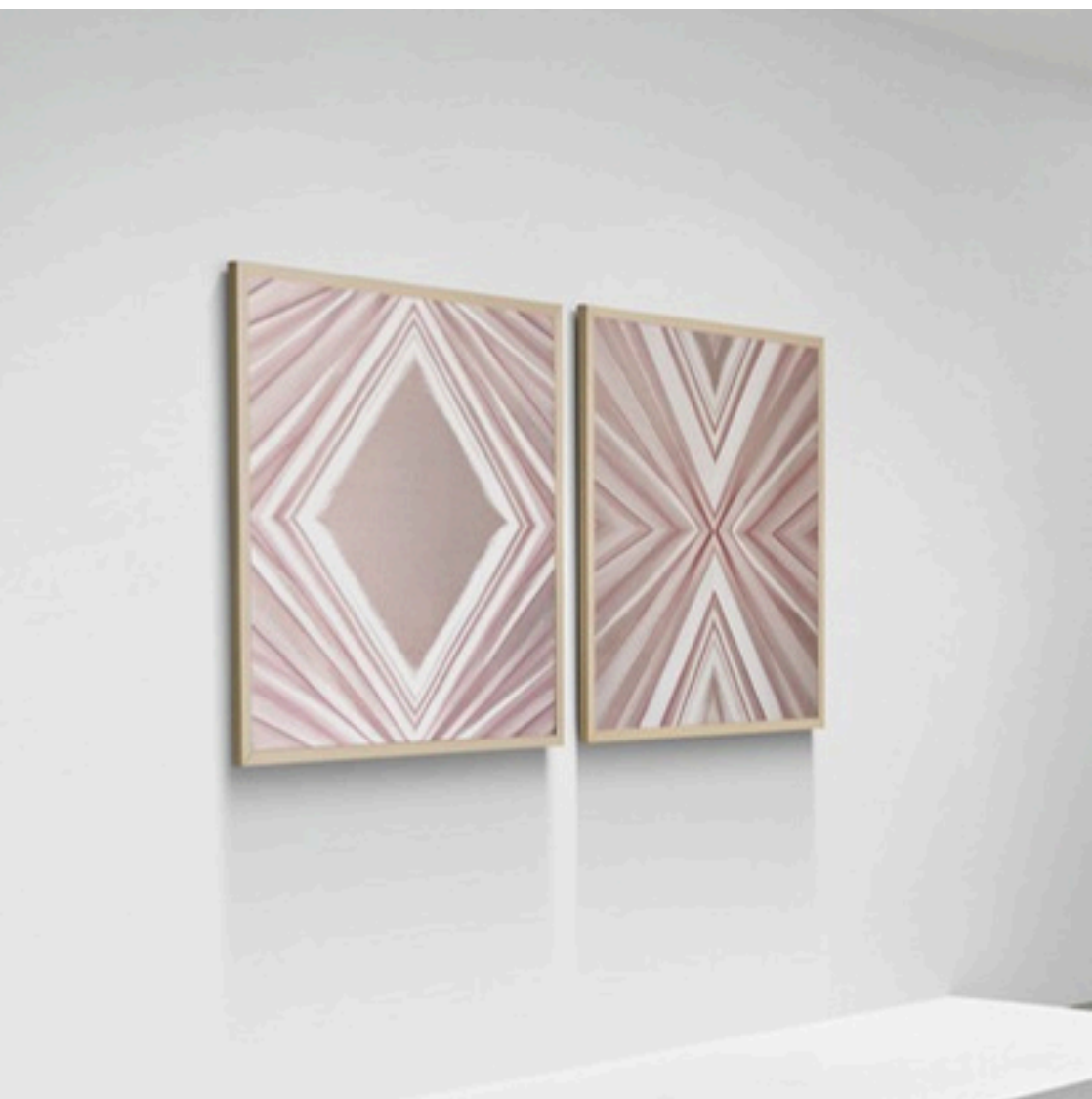
50 x 50 cm

2026

Full price: £650

Reserve price: £320

BLOOM I & II



VELVET ON VELVET (GREEN)



Acrylic on green velvet

40 x 50 cm

2026

Hand-painted onto a plush green velvet, repeated folds are held within geometric frames, creating a play between flat surface and painted shadow.

Full price: £450

Reserve price: £260

VELVET ON VELVET (BLUE)



Acrylic on navy velvet

40 x 50 cm

2026

Hand-painted onto deep navy velvet, the work uses geometric layers to interrupt the image, shifting between illusion, surface and material.

Full price: £450

Reserve price: £260

DOUBLE DENIM I



Acrylic on denim

40 x 50 cm

2026

Acrylic on hand-stretched denim canvas, the work uses a familiar material as both image and surface, and geometric disruptions interrupt the illusion of folded fabric.

Full price: £450

Reserve price: £260

VELVET STUDY (BLUE)



Acrylic on blue velvet

20 x 25 cm

2026

Created directly onto plush blue velvet, the work depicts the textile surface on itself, blurring the boundary between painted image and physical material.

Full price: £250

Reserve price: £160

DOUBLE DENIM II



Acrylic on denim

20 x 25 cm

2026

Acrylic on hand-stretched denim canvas. The work uses a familiar material as both image and surface, while geometric layers interrupt the illusion of folded fabric.

Full price: £250

Reserve price: £160

FIRST LIGHT



Acrylic on bronze velvet

20 x 25 cm

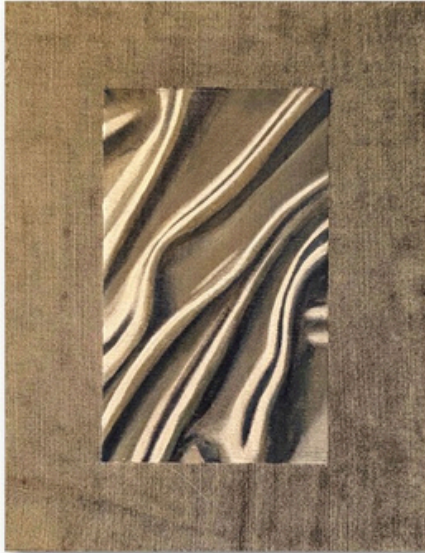
2026

Hand-painted onto light-responsive velvet, the surface responds to movement and light, creating subtle shifts in colour and tone.

Full price: £250

Reserve price: £160

SECOND LIGHT



Acrylic on green velvet

20 x 25 cm

2026

Hand-painted onto light-responsive velvet, the surface responds to movement and light, creating subtle shifts in colour and tone.

SOLD ●

MOIRÉ STUDIES

Moiré is a textile with a distinctive rippled surface that changes appearance as light and viewing position shift, creating an active and continually changing viewing experience. Inspired by Bridget Riley's exploration of perception and optical effects, this series is painted directly onto the material, blurring the boundaries between painted geometry, woven texture and visual illusion.



MOIRÉ STUDY I



Acrylic paint and textile trim on moiré fabric

50 x 70 cm

2026

Full price: £750

Reserve price: £420

MOIRÉ STUDY II



Acrylic paint and textile trim on moiré fabric

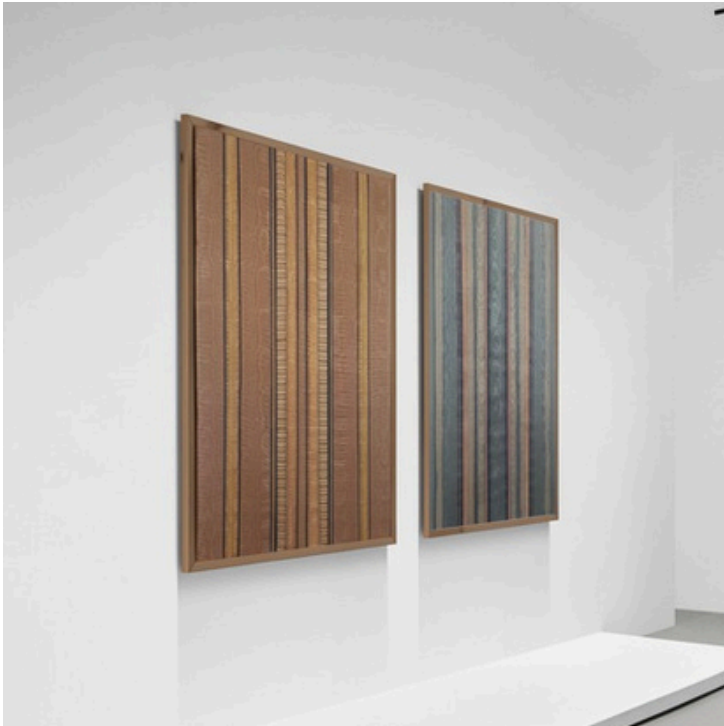
50 x 70 cm

2026

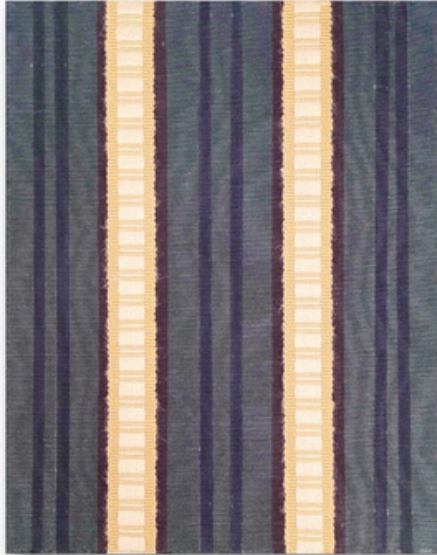
Full price: £750

Reserve price: £420

MOIRÉ STUDIES I & II



MOIRÉ STUDY III



Acrylic paint and textile trim on moiré fabric

20 x 25 cm

2026

No reserve price - *make an offer.*

MOIRÉ STUDY IV



Acrylic paint and textile trim on moiré fabric

20 x 25 cm

2026

No reserve price - *make an offer.*

MOIRÉ STUDY V



Acrylic paint and textile trim on moiré fabric

20 x 25 cm

2026

No reserve price - *make an offer.*

MOIRÉ STUDIES III, IV & V



W: WWW.ALYLLOYD.CO.UK
E: INFO@ALYLLOYD.CO.UK
IG: @ALYLLOYD

